

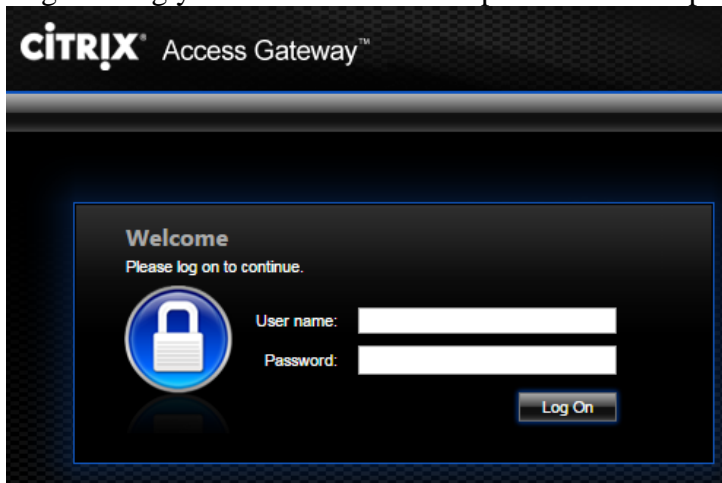
Using ArcGIS Tools in GLG362/598

In this course we will use ArcMap and ArcScene extensively. These tools are available to you in three ways: via StudentApps (NOT MyApps, which is being replaced/updated) (run from anywhere with internet connection, store your data on MyFiles – your M: drive), locally on PCs in PSH-461, or installed locally on your own laptop (TA has the install disks – 1 year education licenses). ArcGIS Install directions are attached at the end of this document and posted on the course website. So everyone learns it, we will start using StudentApps. This handout covers: (1) How to run ArcMap (or ArcScene) through StudentApps and (2) How to access class data via (a) StudentApps, (b) local PCs in H461, and (c) for download to your own laptop.

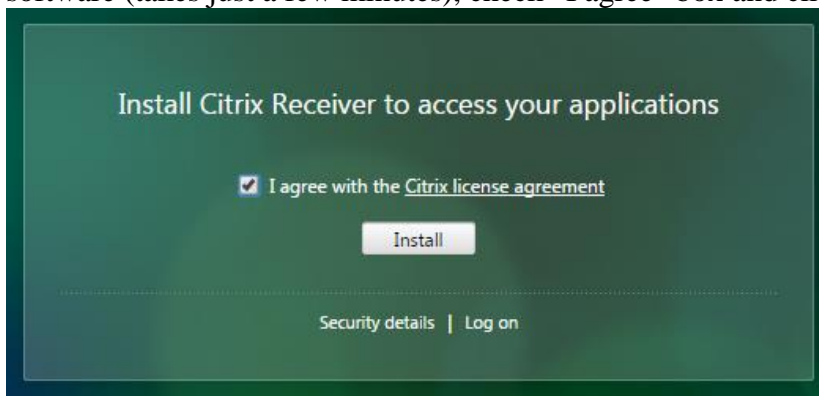
I. Accessing ArcGIS tools (ArcMap or ArcScene) Online using StudentApps.

Go to <https://studentapps.asu.edu> (do not use MyApps via MyASU).

Log in using your ASURITE ID and password at the prompt:

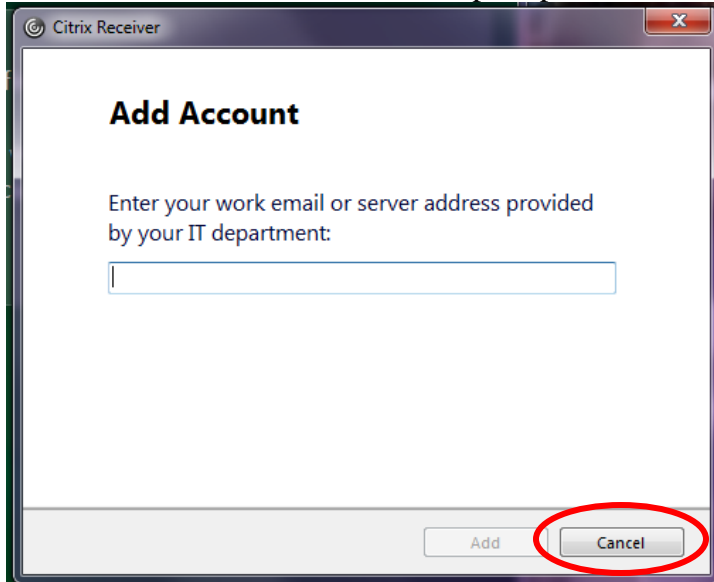


The first time you access from a given computer you will need to install the client software (takes just a few minutes), check “I agree” box and click Install button:

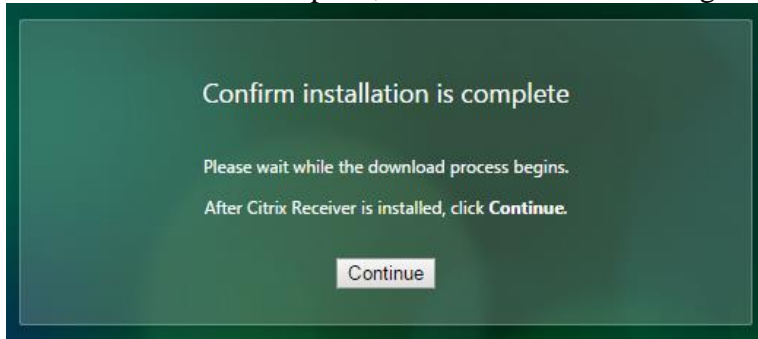


Clicking install downloads “CitrixReceiverWeb.exe” to your download folder. Do Not click “Continue” yet. Once downloaded, double click to run the installer (click Yes to allow it to install). Follow prompts, click “agree” on the license, and complete the

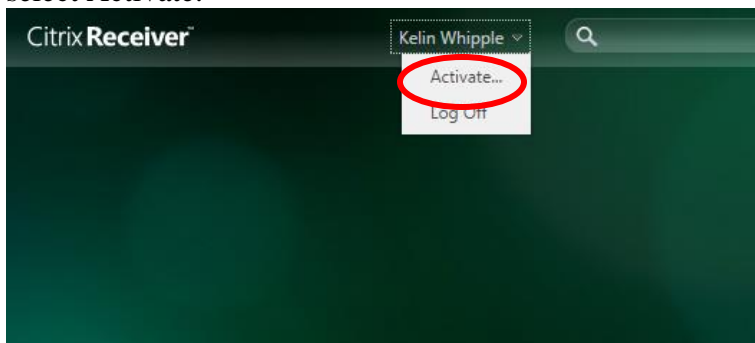
installation. Citrix will prompt you to create an Account, but this does not work and is not needed. Click cancel to dismiss that prompt.



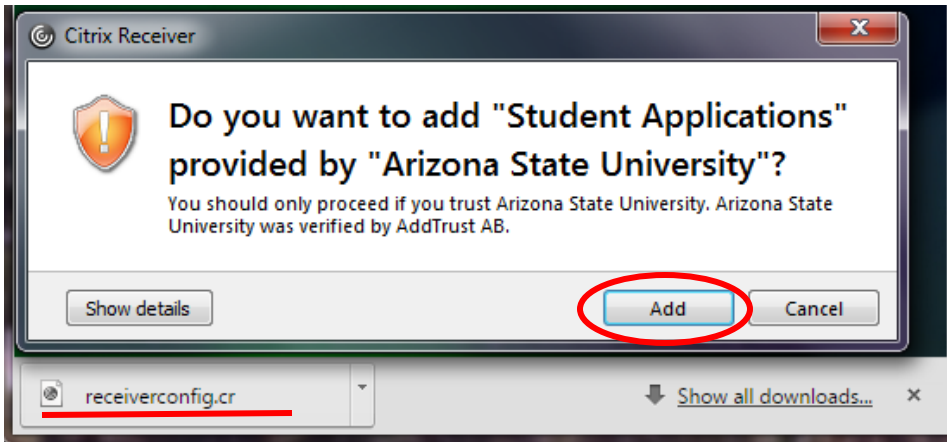
Now installation is complete, click “Continue” on the green Citrix screen:



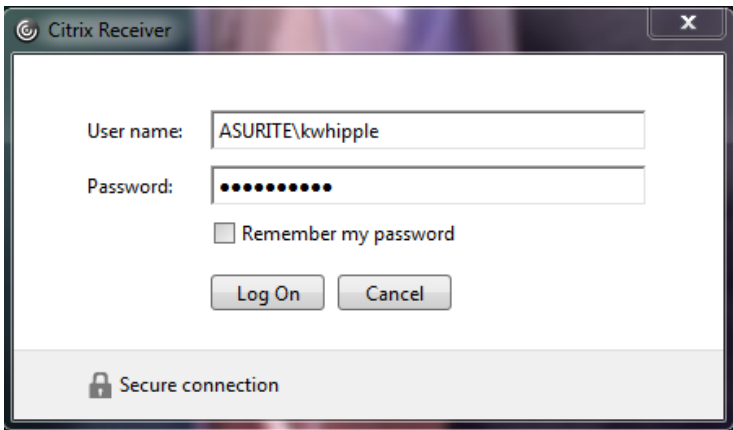
This will land you on the Citrix Receiver Screen, which will be all green and blank at first. At the top, choose the drop-down menu next to your user name (ASURITE ID) and select Activate:



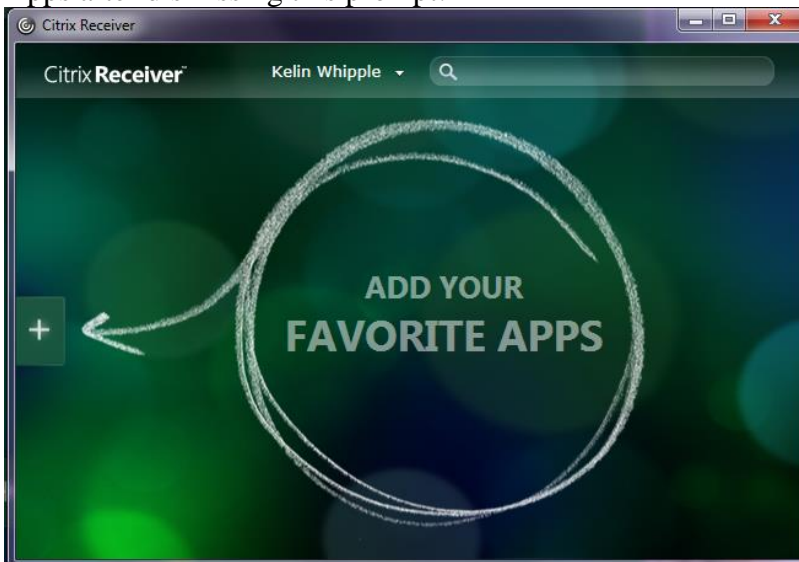
This will download the file citrixreceiverconfig.cr to your downloads folder. Double click this file to open it and click “Add” on the dialog box that opens:



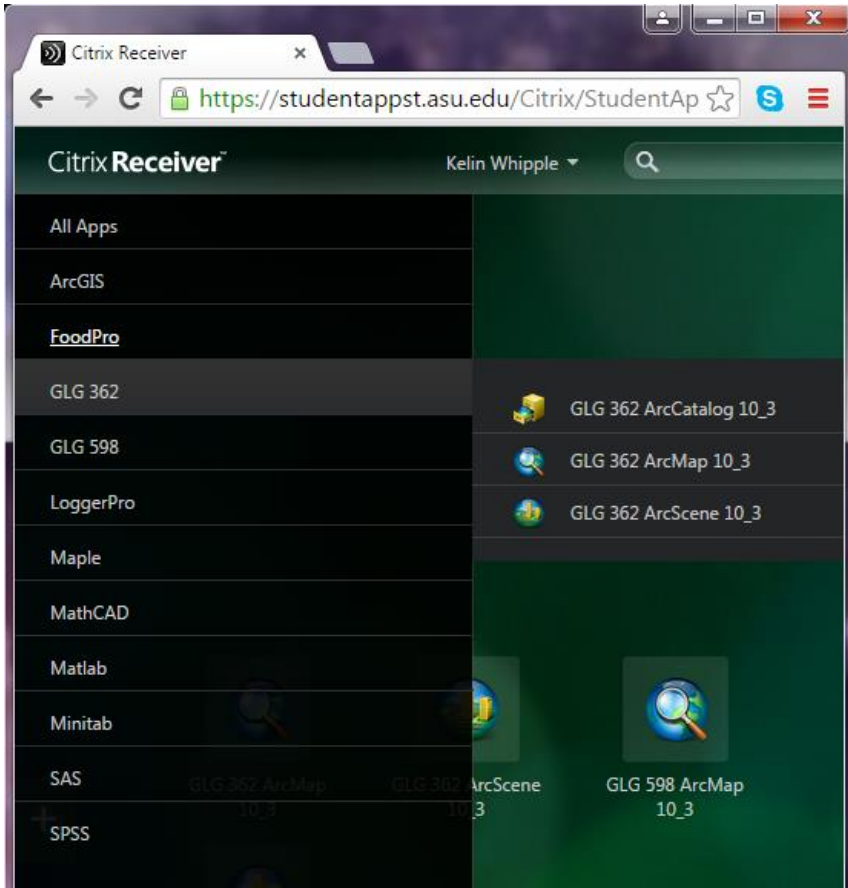
At the prompt, login to the Citrix Receiver with your ASURITE ID in this format:



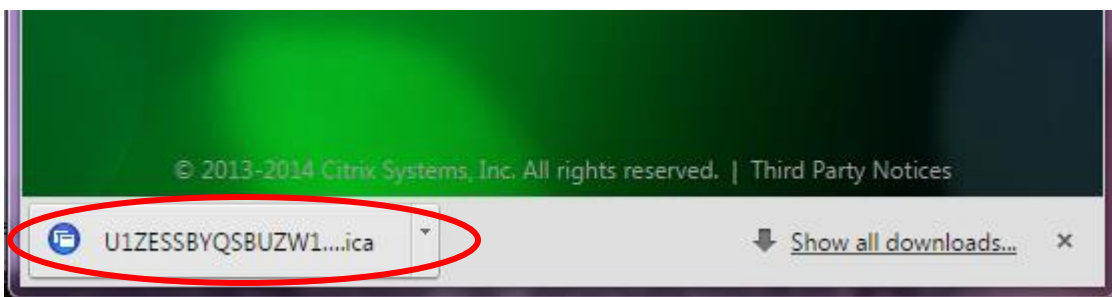
Whew, now you are in, time to find the Apps you want to run. Click on the big "+" sign in the middle left of the green Citrix Receiver Webpage to load start-up icons for your Apps after dismissing this prompt:



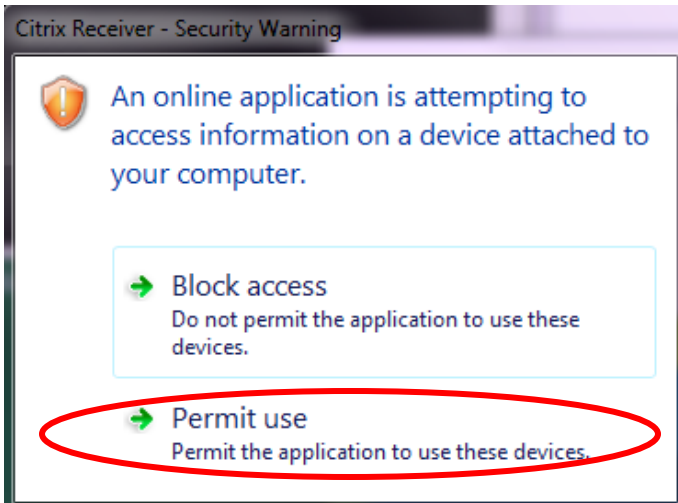
Navigate to GLG362 or GLG598 and select ArcMap, ArcScene and ArcCatalog. DO NOT Navigate to ArcGIS: *ONLY the GLG362 or GLG598 versions of ArcGIS applications will allow you to “see” the instructor volume where all class data will be stored. You must be registered in the course for this to work.*



Once you have the icons for these Apps on your home page screen on the Citrix Receiver Webpage you can start applications by clicking on the icons. Almost there. Clicking on the icons does not start the application but rather downloads an `***.ica` executable file to your downloads page (or bottom left corner of your browser). Double click the `***.ica` file to launch the application:



Click Permit Use to Allow the Application to run on your computer:

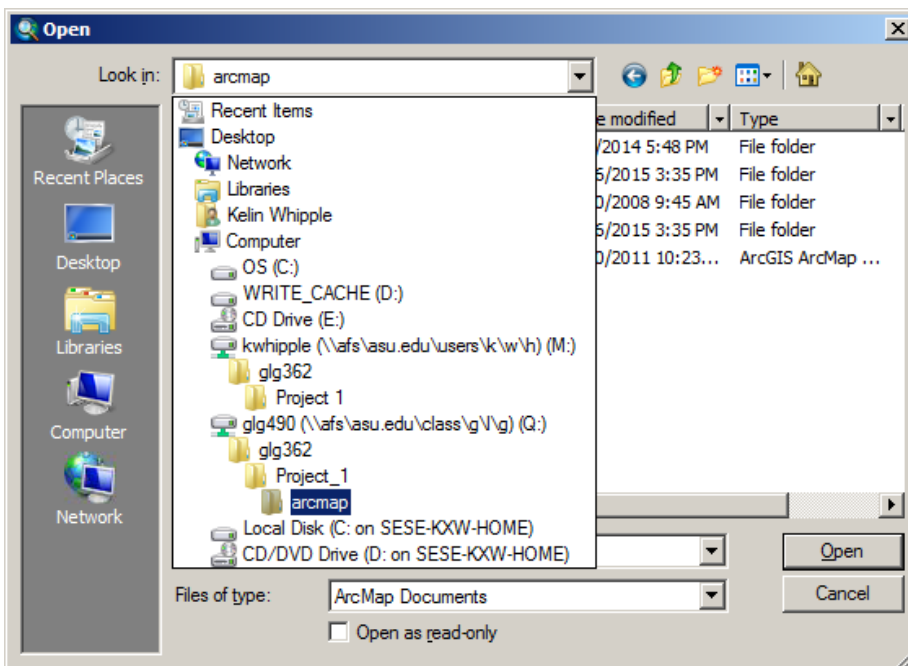


The ArcGIS application will open. Select to create a new, Blank project. Note that the **ONLY** way to work efficiently is to save all your data to the M: Drive or your MyFiles (every student by default has 4GB space on the M: drive, which will be plenty).

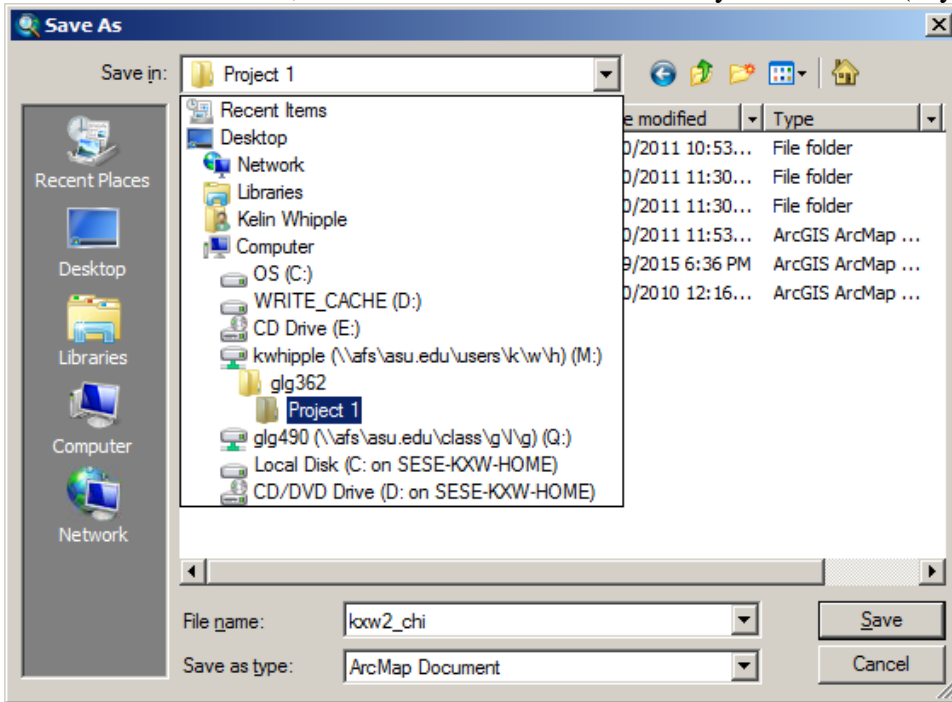
II. Accessing Course Data for GLG362/598.

A. Via StudentApps

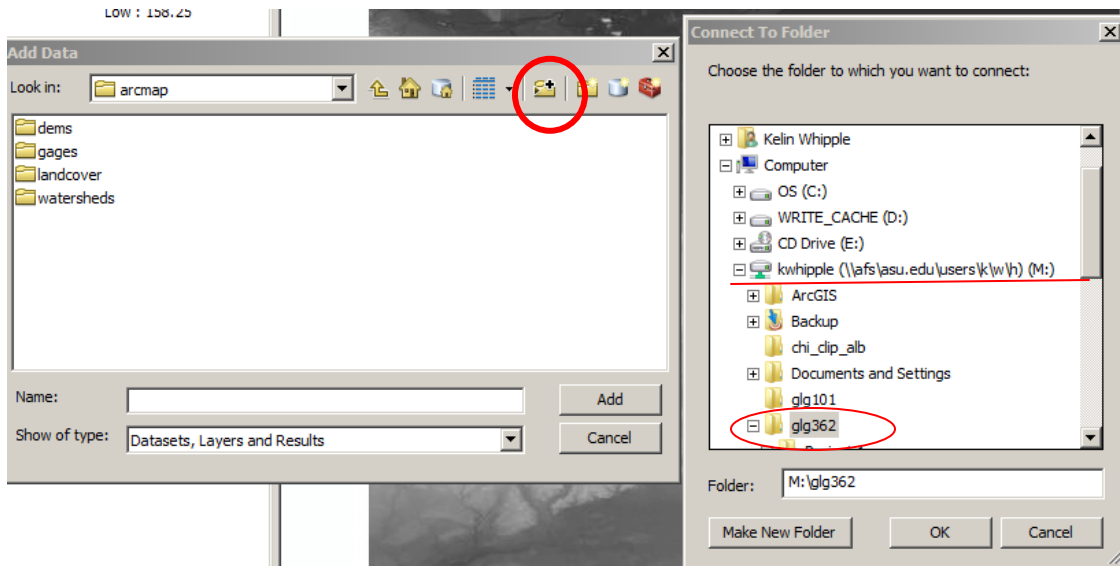
From the GLG362 or GLG598 ArcMap version you can see the Instructor Volume as an option when you select “Save As”, “Open” or “Add Folder Connection” (**Q drive**) (**\\afs.asu.edu\class\g\l\g\lg490**) (note glg490 name is just a legacy from the first time this was set up). To get started, open (main toolbar, folder with “+”) the existing chi_area.mxd on the Q: Drive, navigate to Computer\glg490\glg362\Project_1\arcmap:



As soon as it is loaded, save as a different file name on your M: drive (MyFiles):



ArcMap is running on the application server, just using your computer as a video terminal. All will run fast and efficient if you use the M drive for saving all your data. Note you can access you M: drive via MyASU/My Files so you can move files to and from the M: drive and any local computer. If for some reason you do not see the M: or Q: drives in the Open or Save As dialog boxes, or in the Add Data dialog box, you will need to use the “Add Folder Connections” tool (folder icon with a “+”) in any of these dialog boxes (only the first time). You can connect to the Drive level (underline) or to a specific sub-folder (red oval):



Other versions of ArcMap cannot see anything on the Q: drive. You must use the GLG362 or GLG598 version.

Also see http://help.asu.edu/My_Apps for general help on the “AFS space” which is also known as you M: drive, and also can be accessed through MyASU/MyFiles. Projects and data files saved to the M: drive while working via StudentApps, can be downloaded to another computer and used with a local installation of ArcGIS.

B. Run ArcMap Locally in H461

Each PC in PSH-461 has all course data pre-loaded to C:\geomorphology. DO NOT move or modify any data in this directory. DO NOT save your work to this directory – you MUST save your data into My Documents or onto a thumb drive when working with a local version of any application. If you want to later work with a project started on the local machine you will need to either: (a) sit at the same PC, (b) copy your data from thumb drive to new computer, or (c) copy your data to your My Files so you can access it from anywhere.

Also see http://help.asu.edu/My_Apps for general help on the “AFS space” which is also known as you M: drive, and also can be accessed through MyASU/MyFiles.

C. Install ArcMap and ArcScene on your own Laptop

We have install disks for ArcGIS10, 1-year educational licenses, available for your use. ArcGIS only runs in the Windows environment, so if you have a Mac you will need Boot Camp or Parallels (or equivalent) to be able to run it locally on your laptop. All laptops can connect to MyApps.

*If you want to run locally on your laptop, use SSH to general.asu.edu to download the data to your laptop (see <http://www.asu.edu/myapps> to download SSH and [Access an Instructor Volume](#) (scroll down to **Using SFTP Method** on that webpage) for info on connecting to the data volume). The datasets for class projects can be large – make sure you have a fast connection before downloading, and expect it to take a while. General information and instructions for accessing Instructor Volumes (the Q: drive) can also be found at [Access an Instructor Volume](#) .*